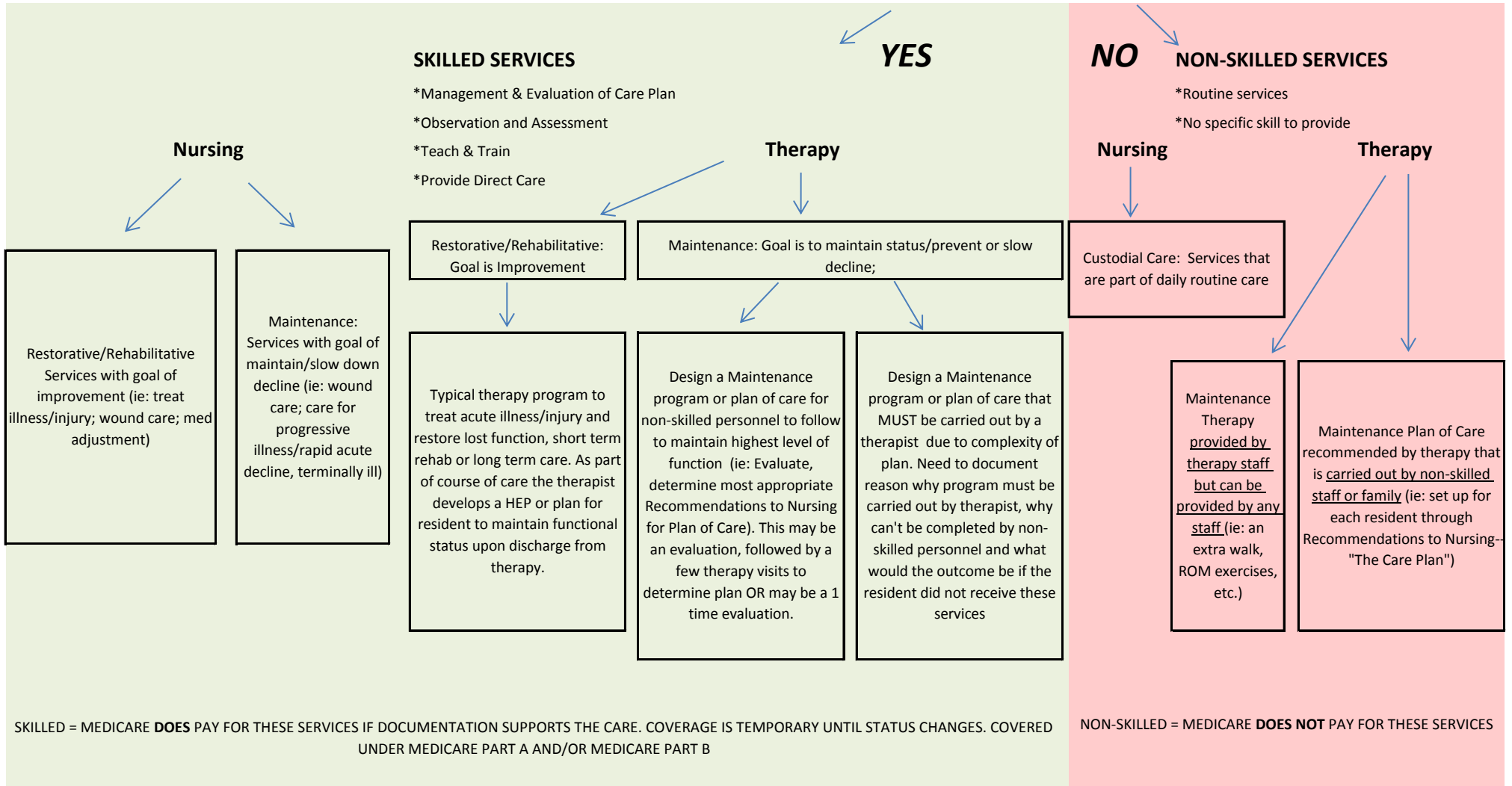


Therapy and Nursing Services in Long Term Care

At **this moment** in time, are the services **reasonable, necessary and effective** for the condition being treated AND do they require the skills of a nurse or therapist?



*Residents can move in and out of different categories during a course of illness, can be skilled for therapy/nursing and maintenance for other

**Goals of Assessment and Plan of Care will determine what category they fall into